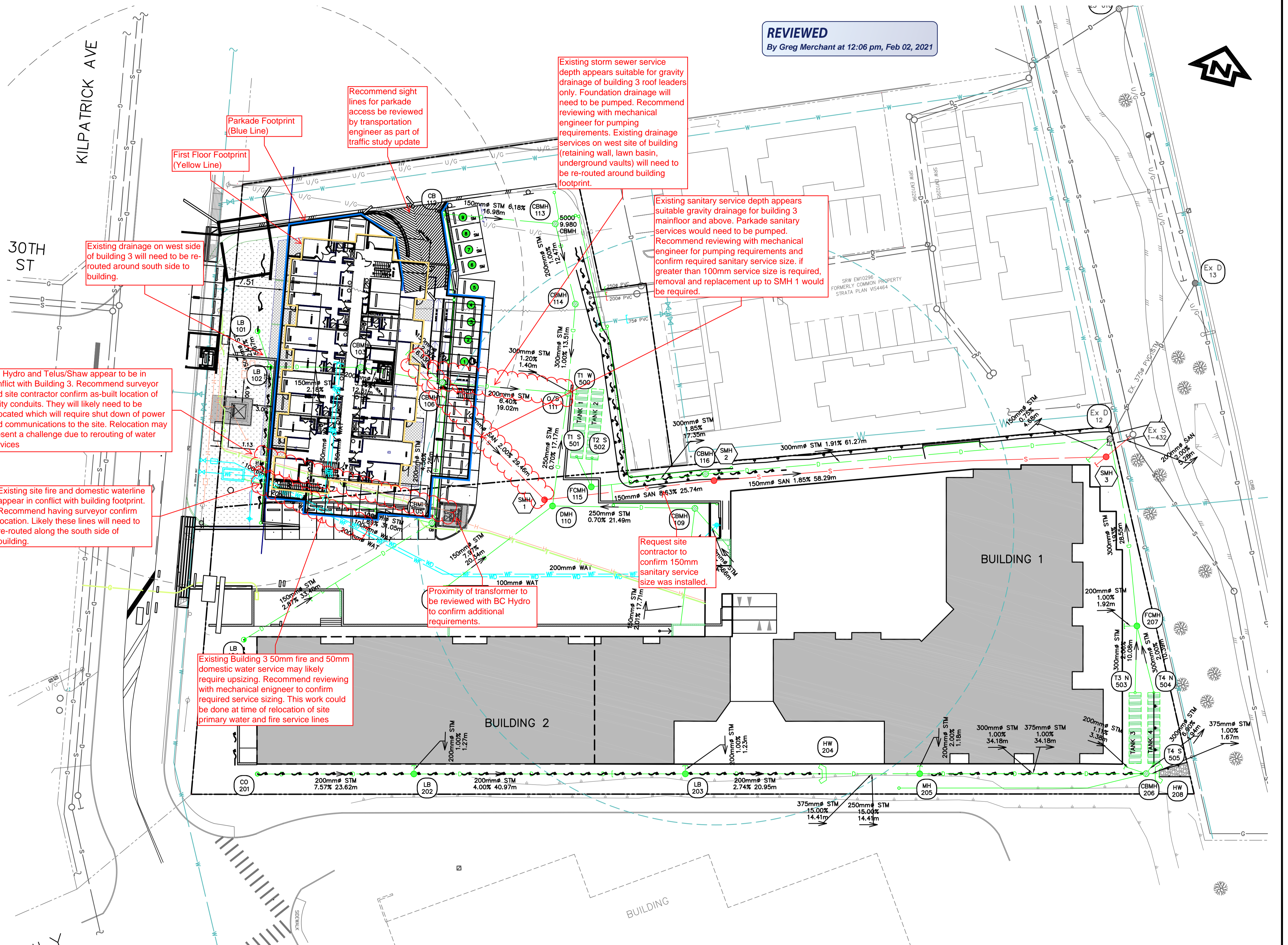


STM MH'S	
MH	Details
12	RIM EL = 8.02 1200mm# INV (SW) = 5.88 INV (SE) = 5.89 INV (W) = 6.71 INV (S) = 5.85 INV (N) = 5.84
101	RIM EL = 11.79 600mm# INV (SE) = 11.04
102	RIM EL = 13.35 600mm# INV (NW) = 10.90 INV (E) = 10.87
103	RIM EL = 11.93 1050mm# INV (W) = 10.57 INV (E) = 10.52
104	RIM EL = 12.85 600mm# INV (NE) = 12.10
105	RIM EL = 12.24 1050mm# INV (SW) = 11.14 INV (W) = 11.05 INV (N) = 11.00
106	RIM EL = 11.25 1050mm# INV (S) = 10.03 INV (W) = 10.10 INV (NW) = 10.15 INV (E) = 10.00
107	RIM EL = 10.69 1050mm# INV (N) = 9.58
109	RIM EL = 10.17 1050mm# INV (S) = 9.23 INV (SE) = 9.10 INV (W) = 9.05
110	RIM EL = 11.32 1050mm# INV (E) = 8.90 INV (SW) = 8.90 INV (N) = 8.87
111	RIM EL = 10.70 1050mm# INV (S) = 8.75 INV (N) = 8.57 INV (W) = 8.78 INV (E) = 8.57
112	RIM EL = 10.65 600mm# INV (E) = 9.90
113	RIM EL = 9.97 1050mm# INV (W) = 8.85 INV (SE) = 8.84
114	RIM EL = 10.43 1050mm# INV (NW) = 8.72 INV (S) = 8.71
115	RIM EL = 11.20 1500mm# INV (NW) = 8.22 INV (N) = 8.22 INV (E) = 8.22
116	RIM EL = 9.24 1050mm# INV (W) = 7.90 INV (E) = 7.88
117	RIM EL = 11.71 600mm# INV (NE) = 10.52
201	RIM EL = 16.18 INV (E) = 15.31
202	RIM EL = 14.43 600mm# INV (W) = 13.52 INV (N) = 13.56 INV (E) = 13.52
203	RIM EL = 12.91 1050mm# INV (W) = 11.88 INV (N) = 11.92 INV (E) = 11.88
204	RIM EL = 12.30 INV (W) = 11.31 250 INLET: INV (E) = 11.31 375 OUTLET: INV (E) = 11.76
206	RIM EL = 10.67 1050mm# 250 INLET: INV (W) = 9.15 205 INV (N) = 8.93 375 INLET: INV (W) = 9.60 375 OUTLET: INV (E) = 9.34 300 OUTLET: INV (E) = 8.85
208	RIM EL = 9.68 1200mm# 375 INLET: INV (W) = 9.00 200 ROOF: INV (W) = 8.30 300 INLET: INV (W) = 8.51 INV (NE) = 8.20 INV (E) = 9.00

STM MH'S	
MH	Details
207	RIM EL = 9.12 1500mm# INV (SW) = 5.88 INV (S) = 6.49 INV (W) = 6.47 INV (N) = 6.44
208	RIM EL = 9.52 ???mm# INV (W) = 8.98

SAN MH'S	
MH	Details
S1	RIM EL = 11.35 1050mm# INV (NW) = 10.10 INV (E) = 9.96
S1-432	RIM EL = 7.94 1050mm# INV (SW) = 5.23 INV (SE) = 5.18 INV (NW) = 5.18
S2	RIM EL = 9.53 1050mm# INV (SW) = 7.74 INV (N) = 7.69
S3	RIM EL = 8.09 1050mm# INV (SW) = 6.59 INV (W) = 6.59 INV (NE) = 6.34



N:\17\17-0273B - Phase 2 Mixed Dev Kilpatrick - Dulex\Design - Current Drawing Files\17-0273B.dwg 2021/1/26 04:31:22 PM (duerden)

LEGAL:	A	ISSUED FOR DEVELOPMENT PERMIT	2017-11-08	GRM
LOT B, PLAN VIP81460	B	ISSUED FOR BUILDING PERMIT	2017-12-15	TJD
LOT 3, PLAN VIP35438	C	RE-ISSUED FOR BUILDING PERMIT	2018-04-20	TJD
	D	ISSUED FOR TENDER	2018-05-14	TJD
	E	ISSUED FOR CONSTRUCTION	2018-06-08	TJD
	F	RE-ISSUED FOR BLDG 1 CONSTRUCTION & BLDG 2 DP/BP	2018-08-10	TJD
	G	ISSUED FOR PHASE 2 CONSTRUCTION & BUILDING PERMIT	2019-01-23	TJD
BM/TBM:	REV	DESCRIPTION	YYYY-MM-DD	BY
ELEVATIONS ARE GEODETIC				
G. C. M. 84942				
26.774m				

PROJ. MGR.	GRM	 www.wedler.com
DESIGN/DRAWN	TJD	
PEER REVIEWED	-	
HORIZ. SCALE	1:300	
VERT. SCALE	-	

THE WEDLER GROUP  
 ■ Abbotsford 1.604.746.0300  
 ■ Chilliwack 1.604.792.0651  
 ■ Courtenay 1.250.334.3263  
 ■ Surrey 1.604.588.1919

NEWPORT VILLAGE COURTENAY DEVELOPMENTS LTD.  
 NEWPORT VILLAGE COURTENAY DEVELOPMENTS LTD.  
 3040 AND 3070 KILPATRICK AVENUE, COURTENAY, BC

SITE SERVICING

DRAWING NO.	OF 9
V17-0273/B-02	
LOCAL GOVERNMENT FILE	BP013939
PHASE	REVISION
	G