



GIROUX DESIGN GROUP  
*Quality Home and Building Design Since 1950.*



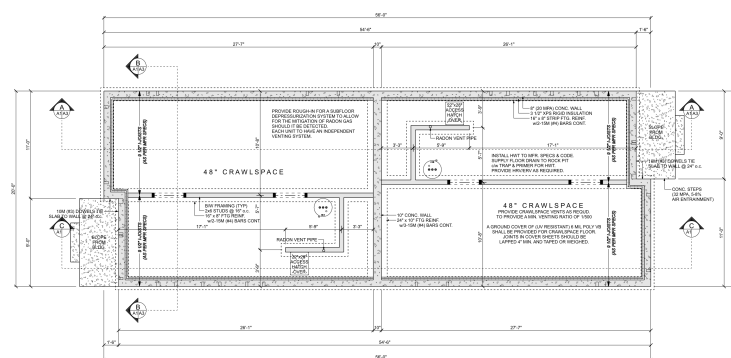
195361  
CRAWLSPACE

***www.girouxdesigngroup.com***

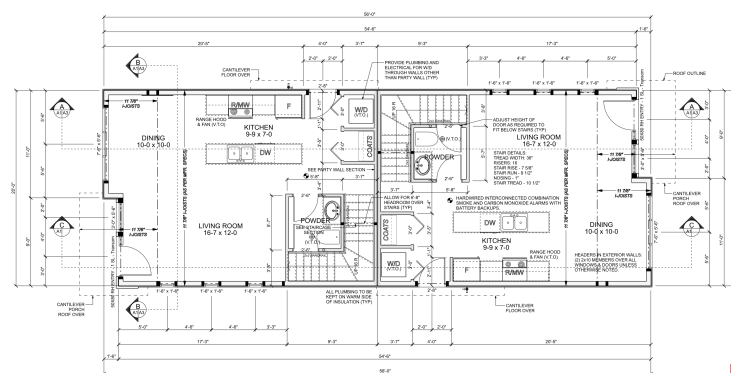


**COPYRIGHTED DOCUMENTS  
ILLEGAL TO REPRODUCE**

THESE PLANS ARE THE COPYRIGHTED PROPERTY OF GIBSON DESIGN GROUP, INC. AND HAVE BEEN LICENSED TO THE ORIGINAL PURCHASER FOR THE CONSTRUCTION OF ONE BUILDING. IT IS UNLAWFUL TO REPRODUCE THESE DOCUMENTS WITHOUT WRITTEN PERMISSION IN THE FORM OF A LICENSE AGREEMENT.



**CRAWLSPACE FOUNDATION PLAN**  
SCALE: 1/4" = 1'-0"  
CRAWLSPACE AREA: 1093 sq.ft. (546.5 sq.ft. PER UNIT)



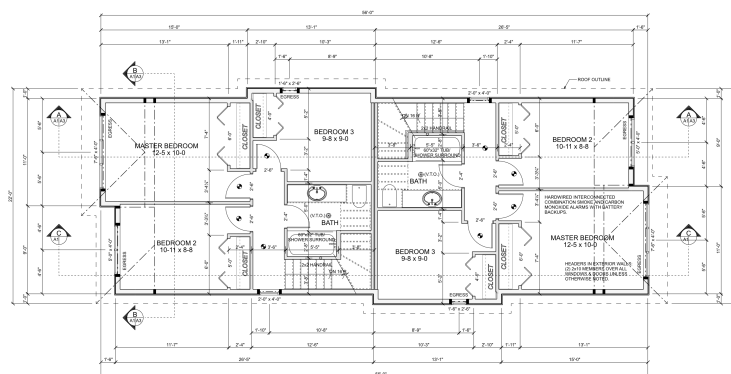
**MAIN FLOOR PLAN**  
SCALE: 1/4" = 1'-0"  
MAIN FLOOR AREA: 1093 sq. ft. (546.5 sq. ft. PER UNIT)

**COPYRIGHTED DOCUMENTS  
ILLEGAL TO REPRODUCE**

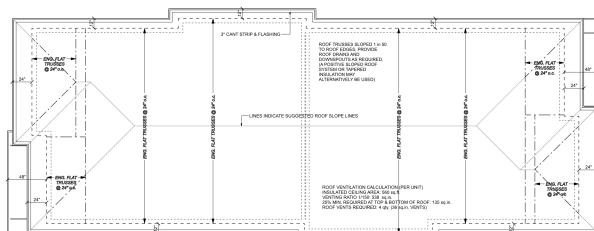
THESE PLANS ARE THE COPYRIGHTED PROPERTY  
OF GROSCH DESIGN GROUP INC. AND HAVE BEEN  
LICENSED TO THE ORIGINAL PURCHASER FOR  
THE CONSTRUCTION OF ONE BUILDING.  
IT IS UNLAWFUL TO REPRODUCE THESE  
DOCUMENTS WITHOUT WRITTEN PERMISSION  
IN THE FORM OF A LICENSE AGREEMENT.

[illegible][illegible]

Crawlspace Foundation & Main Floor Plan



SECOND FLOOR PLAN  
SCALE: 1/4" = 1'-0"  
SECOND FLOOR LIVING AREA: 1119 sq.ft. (559.5 sq.ft. PER UNIT)



ROOF SYSTEM LAYOUT  
SCALE: 1/4" = 1'-0"  
MAIN ROOF AREA: 1356 sq.ft.  
PORCH ROOF AREA: 84 sq.ft.  
ROOFING MATERIAL: TORCH-APPLIED ROOFING MEMBRANE  
SLOPE: MIN. 1/8"

COPYRIGHTED DOCUMENTS  
ILLEGAL TO REPRODUCE  
THESE PLANS ARE THE COPYRIGHTED PROPERTY OF GIRONX DESIGN GROUP INC. AND HAVE BEEN LICENSED TO THE ORIGINAL PURCHASER FOR THE CONSTRUCTION OF ONE BUILDING. IT IS ILLEGAL TO REPRODUCE THESE DOCUMENTS WITHOUT WRITTEN PERMISSION IN THE FORM OF A LICENSE AGREEMENT.

## Second Floor Plan & Roof Plan

© Gironx Design Group Inc. - MCMC - All Rights Reserved  
These plans are the copyrighted property of Gironx Design Group Inc. and have been licensed to the original purchaser for the construction of one building. It is illegal to reproduce these documents without written permission in the form of a license agreement.

PLAY NO: 195361  
SHEET NO: A2  
www.gironxdesigngroup.com - www.houseplanners.com

### GENERAL CONSTRUCTION NOTES:

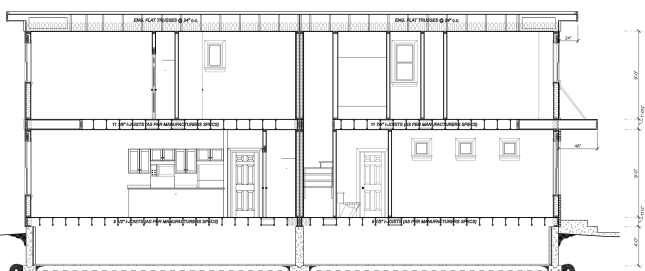
**DISCLAIMER:**  
THESE PLANS ARE THE PROPERTY OF GIRONX DESIGN GROUP INC. AND HAVE BEEN LICENSED TO THE ORIGINAL PURCHASER FOR THE CONSTRUCTION OF ONE BUILDING. IT IS ILLEGAL TO REPRODUCE THESE DOCUMENTS WITHOUT WRITTEN PERMISSION IN THE FORM OF A LICENSE AGREEMENT.

**CONSTRUCTION NOTES:**  
1. ALL CONSTRUCTION SHALL BE IN ACCORDANCE WITH THE 2018 INTERNATIONAL RESIDENTIAL CODE (IRC) AND THE 2018 INTERNATIONAL BUILDING CODE (IBC).  
2. ALL DIMENSIONS SHALL BE GIVEN IN FEET AND INCHES. DIMENSIONS SHALL BE GIVEN TO THE CENTER OF THE STUDY.  
3. ALL DIMENSIONS SHALL BE GIVEN TO THE CENTER OF THE STUDY.  
4. ALL DIMENSIONS SHALL BE GIVEN TO THE CENTER OF THE STUDY.  
5. ALL DIMENSIONS SHALL BE GIVEN TO THE CENTER OF THE STUDY.  
6. ALL DIMENSIONS SHALL BE GIVEN TO THE CENTER OF THE STUDY.  
7. ALL DIMENSIONS SHALL BE GIVEN TO THE CENTER OF THE STUDY.  
8. ALL DIMENSIONS SHALL BE GIVEN TO THE CENTER OF THE STUDY.  
9. ALL DIMENSIONS SHALL BE GIVEN TO THE CENTER OF THE STUDY.  
10. ALL DIMENSIONS SHALL BE GIVEN TO THE CENTER OF THE STUDY.

**FRAMING NOTES:**  
1. ALL FRAMING SHALL BE IN ACCORDANCE WITH THE 2018 INTERNATIONAL RESIDENTIAL CODE (IRC) AND THE 2018 INTERNATIONAL BUILDING CODE (IBC).  
2. ALL FRAMING SHALL BE IN ACCORDANCE WITH THE 2018 INTERNATIONAL RESIDENTIAL CODE (IRC) AND THE 2018 INTERNATIONAL BUILDING CODE (IBC).  
3. ALL FRAMING SHALL BE IN ACCORDANCE WITH THE 2018 INTERNATIONAL RESIDENTIAL CODE (IRC) AND THE 2018 INTERNATIONAL BUILDING CODE (IBC).  
4. ALL FRAMING SHALL BE IN ACCORDANCE WITH THE 2018 INTERNATIONAL RESIDENTIAL CODE (IRC) AND THE 2018 INTERNATIONAL BUILDING CODE (IBC).  
5. ALL FRAMING SHALL BE IN ACCORDANCE WITH THE 2018 INTERNATIONAL RESIDENTIAL CODE (IRC) AND THE 2018 INTERNATIONAL BUILDING CODE (IBC).  
6. ALL FRAMING SHALL BE IN ACCORDANCE WITH THE 2018 INTERNATIONAL RESIDENTIAL CODE (IRC) AND THE 2018 INTERNATIONAL BUILDING CODE (IBC).  
7. ALL FRAMING SHALL BE IN ACCORDANCE WITH THE 2018 INTERNATIONAL RESIDENTIAL CODE (IRC) AND THE 2018 INTERNATIONAL BUILDING CODE (IBC).  
8. ALL FRAMING SHALL BE IN ACCORDANCE WITH THE 2018 INTERNATIONAL RESIDENTIAL CODE (IRC) AND THE 2018 INTERNATIONAL BUILDING CODE (IBC).  
9. ALL FRAMING SHALL BE IN ACCORDANCE WITH THE 2018 INTERNATIONAL RESIDENTIAL CODE (IRC) AND THE 2018 INTERNATIONAL BUILDING CODE (IBC).  
10. ALL FRAMING SHALL BE IN ACCORDANCE WITH THE 2018 INTERNATIONAL RESIDENTIAL CODE (IRC) AND THE 2018 INTERNATIONAL BUILDING CODE (IBC).

**ROOFING NOTES:**  
1. ALL ROOFING SHALL BE IN ACCORDANCE WITH THE 2018 INTERNATIONAL RESIDENTIAL CODE (IRC) AND THE 2018 INTERNATIONAL BUILDING CODE (IBC).  
2. ALL ROOFING SHALL BE IN ACCORDANCE WITH THE 2018 INTERNATIONAL RESIDENTIAL CODE (IRC) AND THE 2018 INTERNATIONAL BUILDING CODE (IBC).  
3. ALL ROOFING SHALL BE IN ACCORDANCE WITH THE 2018 INTERNATIONAL RESIDENTIAL CODE (IRC) AND THE 2018 INTERNATIONAL BUILDING CODE (IBC).  
4. ALL ROOFING SHALL BE IN ACCORDANCE WITH THE 2018 INTERNATIONAL RESIDENTIAL CODE (IRC) AND THE 2018 INTERNATIONAL BUILDING CODE (IBC).  
5. ALL ROOFING SHALL BE IN ACCORDANCE WITH THE 2018 INTERNATIONAL RESIDENTIAL CODE (IRC) AND THE 2018 INTERNATIONAL BUILDING CODE (IBC).  
6. ALL ROOFING SHALL BE IN ACCORDANCE WITH THE 2018 INTERNATIONAL RESIDENTIAL CODE (IRC) AND THE 2018 INTERNATIONAL BUILDING CODE (IBC).  
7. ALL ROOFING SHALL BE IN ACCORDANCE WITH THE 2018 INTERNATIONAL RESIDENTIAL CODE (IRC) AND THE 2018 INTERNATIONAL BUILDING CODE (IBC).  
8. ALL ROOFING SHALL BE IN ACCORDANCE WITH THE 2018 INTERNATIONAL RESIDENTIAL CODE (IRC) AND THE 2018 INTERNATIONAL BUILDING CODE (IBC).  
9. ALL ROOFING SHALL BE IN ACCORDANCE WITH THE 2018 INTERNATIONAL RESIDENTIAL CODE (IRC) AND THE 2018 INTERNATIONAL BUILDING CODE (IBC).  
10. ALL ROOFING SHALL BE IN ACCORDANCE WITH THE 2018 INTERNATIONAL RESIDENTIAL CODE (IRC) AND THE 2018 INTERNATIONAL BUILDING CODE (IBC).

**FINISHES NOTES:**  
1. ALL FINISHES SHALL BE IN ACCORDANCE WITH THE 2018 INTERNATIONAL RESIDENTIAL CODE (IRC) AND THE 2018 INTERNATIONAL BUILDING CODE (IBC).  
2. ALL FINISHES SHALL BE IN ACCORDANCE WITH THE 2018 INTERNATIONAL RESIDENTIAL CODE (IRC) AND THE 2018 INTERNATIONAL BUILDING CODE (IBC).  
3. ALL FINISHES SHALL BE IN ACCORDANCE WITH THE 2018 INTERNATIONAL RESIDENTIAL CODE (IRC) AND THE 2018 INTERNATIONAL BUILDING CODE (IBC).  
4. ALL FINISHES SHALL BE IN ACCORDANCE WITH THE 2018 INTERNATIONAL RESIDENTIAL CODE (IRC) AND THE 2018 INTERNATIONAL BUILDING CODE (IBC).  
5. ALL FINISHES SHALL BE IN ACCORDANCE WITH THE 2018 INTERNATIONAL RESIDENTIAL CODE (IRC) AND THE 2018 INTERNATIONAL BUILDING CODE (IBC).  
6. ALL FINISHES SHALL BE IN ACCORDANCE WITH THE 2018 INTERNATIONAL RESIDENTIAL CODE (IRC) AND THE 2018 INTERNATIONAL BUILDING CODE (IBC).  
7. ALL FINISHES SHALL BE IN ACCORDANCE WITH THE 2018 INTERNATIONAL RESIDENTIAL CODE (IRC) AND THE 2018 INTERNATIONAL BUILDING CODE (IBC).  
8. ALL FINISHES SHALL BE IN ACCORDANCE WITH THE 2018 INTERNATIONAL RESIDENTIAL CODE (IRC) AND THE 2018 INTERNATIONAL BUILDING CODE (IBC).  
9. ALL FINISHES SHALL BE IN ACCORDANCE WITH THE 2018 INTERNATIONAL RESIDENTIAL CODE (IRC) AND THE 2018 INTERNATIONAL BUILDING CODE (IBC).  
10. ALL FINISHES SHALL BE IN ACCORDANCE WITH THE 2018 INTERNATIONAL RESIDENTIAL CODE (IRC) AND THE 2018 INTERNATIONAL BUILDING CODE (IBC).



CROSS SECTION A  
SCALE: 1/4" = 1'-0"



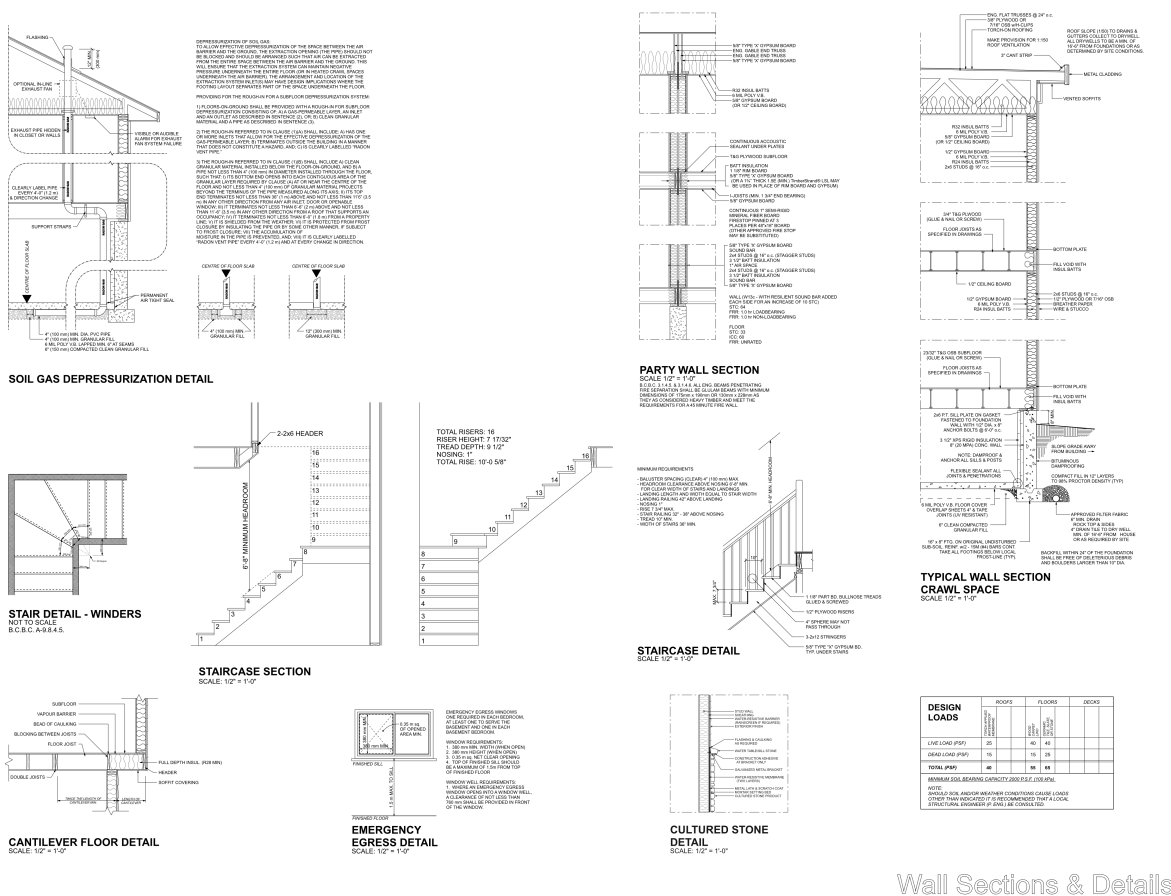
CROSS SECTION B  
SCALE: 1/4" = 1'-0"

COPYRIGHTED DOCUMENTS  
ILLEGAL TO REPRODUCE  
THESE PLANS ARE THE COPYRIGHTED PROPERTY OF GIRONX DESIGN GROUP INC. AND HAVE BEEN LICENSED TO THE ORIGINAL PURCHASER FOR THE CONSTRUCTION OF ONE BUILDING. IT IS ILLEGAL TO REPRODUCE THESE DOCUMENTS WITHOUT WRITTEN PERMISSION IN THE FORM OF A LICENSE AGREEMENT.

## Cross Sections & Notes

© Gironx Design Group Inc. - MCMC - All Rights Reserved  
These plans are the copyrighted property of Gironx Design Group Inc. and have been licensed to the original purchaser for the construction of one building. It is illegal to reproduce these documents without written permission in the form of a license agreement.

PLAY NO: 195361  
SHEET NO: A3  
www.gironxdesigngroup.com - www.houseplanners.com



Wall Sections & Details



**COPYRIGHTED DOCUMENTS  
ILLEGAL TO REPRODUCE**

THESE PLANS ARE THE COPYRIGHTED PROPERTY OF GIRONUX DESIGN GROUP, INC. AND HAVE BEEN LICENSED TO THE ORIGINAL PURCHASER FOR THE CONSTRUCTION OF ONE BUILDING. IT IS UNLAWFUL TO REPRODUCE THESE DOCUMENTS WITHOUT WRITTEN PERMISSION IN THE FORM OF A LICENSE AGREEMENT.

Exterior Elevations








**GIRONUX DESIGN GROUP**  
195361  
A4

www.gironuxdesigngroup.com - www.houseplanners.com

**GIRONUX DESIGN GROUP**  
195361  
A5

www.gironuxdesigngroup.com - www.houseplanners.com



ELECTRICAL LEGEND		
ELECTRICAL	COUNT	SYMBOL
CO Smoke Detector	10	☼
Ceiling Exhaust Fan	4	⊗
Ceiling Fan with Light	8	
Chandelier-Dome Light	2	
Electric Baseboard 24 inch	2	
Electric Baseboard 36 inch	6	
Electric Baseboard 60 inch	6	
Electric Baseboard 72 inch	6	
Electric Baseboard 96 inch	6	
Exterior Wall Light-Contemporary	4	⊗
LED Light	36	○
Outlet 220V	6	⊕
Outlet GFI	4	⊕
Outlet Weatherproof	4	⊕
Outlet-Single	35	⊕
Pendant Cone	6	⊕
Switch 3 Way-Single	20	⊕
Switch-Single	18	⊕
Wall Sconce	8	⊕
Outlet AFI	23	⊕
Switch-Double	10	⊕

**COPYRIGHTED DOCUMENTS  
ILLEGAL TO REPRODUCE**

THESE PLANS ARE THE COPYRIGHTED PROPERTY  
OF GRIQOX DESIGN GROUP INC. AND HAVE BEEN  
LICENSED TO THE ORIGINAL PURCHASER FOR  
THE CONSTRUCTION OF ONE BUILDING.  
IT IS UNLAWFUL TO REPRODUCE THESE  
DOCUMENTS WITHOUT WRITTEN PERMISSION  
IN THE FORM OF A LICENSE AGREEMENT.

**ELECTRICAL NOTE:**  
CONFIRM ALL ELECTRICAL FIXTURE PLACEMENTS AND QUANTITIES WITH HOME OWNER AND BUILDING DEPARTMENT. OBTAIN LOCATIONS ON PLAN. COMPLY WITH MINIMUM BUILDING CODE REQUIREMENTS AND ARE TO BE USED AS A GUIDE ONLY. ADJUST TO MEET OWNERS AND/OR LOCAL AUTHORITIES REQUIREMENTS. HARDWARE INTERCONNECTED SHIRTS & CARBON MONOXIDE DETECTORS AND ALARMS, PROVIDE BATTERY BACKUP FOR ALL UNITS. ALL ELECTRICAL FIXTURES AND ITEMS MUST COMPLY WITH LOCAL ELECTRICAL CODES AND REGULATIONS.

© Cirrus Design Group Inc. MMXX. All Rights Reserved

Due to local codes, regulations and building standards and/or because of specific conditions, these drawings may not be suitable or legal for use in the construction of a building in all facilities. Consequently, these drawings are not to be used as a guide for construction unless the builder has confirmed their suitability and until the drawings have been brought into conformity with all local requirements. Additionally, Group Design Group is unable to accept any liability for the accuracy or overall weight of these drawings in excess of their original production price. Group Design Group does not accept any liability for any errors or omissions, delays, damages, and assumes no responsibility for the same.

**GIROUX DESIGN GROUP**  
Custom Home and Building Design Since 1950.  
Giroux Design Group Inc.  
Phone: 250.276.6373 e-mail: [contact@girouxdesigngroup.com](mailto:contact@girouxdesigngroup.com)

PLAN NO.  
**195361**

DRAWN BY:	REVISED:
-----------	----------

[www.g/rouxdeslangroup.com](http://www.g/rouxdeslangroup.com) - [www.westhomeplanners.com](http://www.westhomeplanners.com) - [www.royalcanin.com](http://www.royalcanin.com)

## Electrical Layout